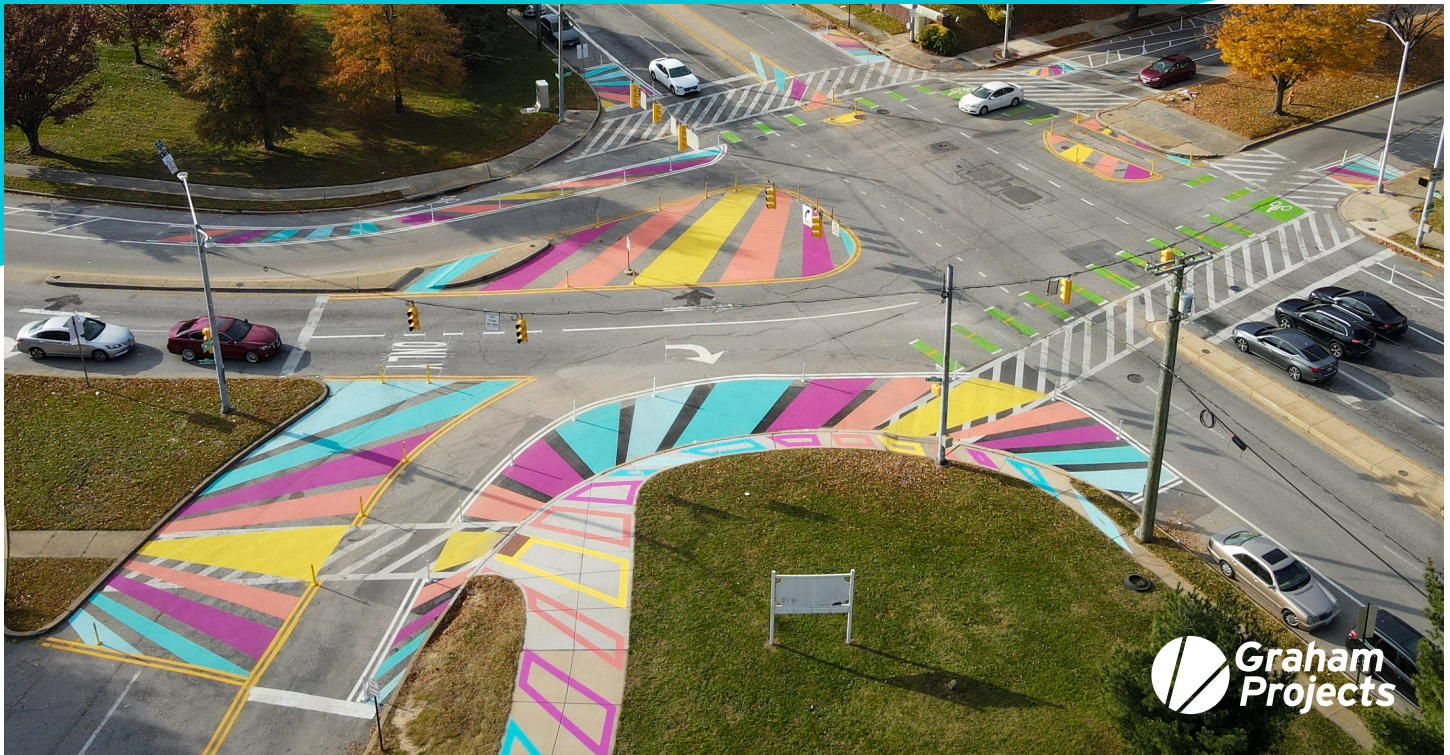


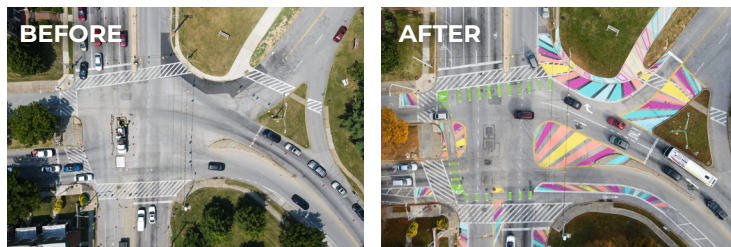
A GRAHAM PROJECTS CASE STUDY

# LAKE 2 LAKE: RAYOBELLO



## THE SITUATION

Increase visibility and pedestrian, wheelchair, and bicycle rider access to Druid Hill Park and Lake Montebello, both of which have seen huge increases in usage during the COVID 19 pandemic as people have sought outdoor spaces for safe walking, biking, and exercise.



## OUR SOLUTION

This project was one of ten selected nationwide by NACTO for their Bloomberg Philanthropies funded 2021 Streets for Pandemic Response and Recovery Grant program. Graham Projects was an integral part of the BCDOT application alongside fellow community partners Bikemore and Black People Ride Bikes. The grant funded community engagement activities for traffic calming, mobile bike shop pop-ups, group bike rides, and the Rayobello pavement art installation at 33rd Street and Hillen Road.





## HOW WE GOT THERE

Lake 2 Lake leveraged existing BCDOT plans for traffic calming at the main intersection gateway to Lake Montebello as well as maintenance and repairs to The Big Jump shared-use path leading to Druid Hill Park. Graham Projects provided project branding design, facilitated community engagement, and solicited community-based design inspiration through COVID-19-safe pop-up drawing events and via COLORoW, our custom online public art drawing tool. Based on the public conversations and drawings submitted by residents, Graham Projects developed design proposals that over 500 residents voted on in selecting the final work of traffic calming public art.



## OUR DESIGN IN ACTION

The Rayobello traffic calming pavement art features bright streaks of yellow, orange, purple, and teals that enhance pedestrian safety within the bump outs, crosswalks, and sidewalks located at the entrance to Lake Montebello at 33rd Street and Hillen Road. Local residents inspired the design by sharing their cherished experiences witnessing colorful sunrises and sunsets as seen from the lake.

## THIS PROJECT...

ENGAGED

**500+**

people in person  
and online

HOSTED

**4**

pop-up events in  
the community

IMPROVED



Human-powered  
access to Lake  
Montebello

ADDED

**10,825<sup>sf</sup>**

of outdoor  
pedestrian space

CREATED



protected bicycle  
crossing to Lake  
Montebello